

BETTER QUALITY COMMITTED

DEVELOPERS
CAPITAL BUILDERS

DESTINATION
ARCHITECTURE INTERIOR DESIGNS

OFFICE ADDRESS

Office No. 02, Ishwar Breez, Plot No.88,
Sector 17, Ulwe, Near Hanuman Mandir

OFFICE ADDRESS

B 506, Shelton Shephire, Sector 15,
Belapur, Behind Croma Opp Belapur Court

FOR BOOKING : +91 97691 19852 / +91 97694 14240 / +91 76767 66900



DNYANESHWAR CAPITAL

Plot No. 177, Sector 25, Pushpak, Ulwe Node, Navi Mumbai.

LAVISH 1 BHK, 2 BHK FLATS & SHOPS



The Project



A NEW LIFE OF Luxury & Comfort AWAITS YOU

A Beautiful Gated Campus High-rises And Retail Units. Dyaneshwar Capital Is Designed to Be A Vibrant Community Of Like - Minded Families. While The Homes Offer Spacious Layouts with maximum Natural Light And Ventilation. The Convenience Of Retail Units Within Campus provides easy Access To Day Today Essentials.



Clear Title CIDCO Transfer Plot



G+7 Storey Residential Cum Commercial Project

Shops, 1BHK & 2BHK Flats With Natural Light



Quality Construction With Earthquake Resistance RCC Structure

Excellent Planning With No Wastage In All Rooms



Intercom Facility

CCTV With DVR Security System, 1st Floor Equipment Gymnasium

Automatic High Speed Elevators

Advance & High Tech Fire Fighting System

Power Backup For Lifts & Common Area

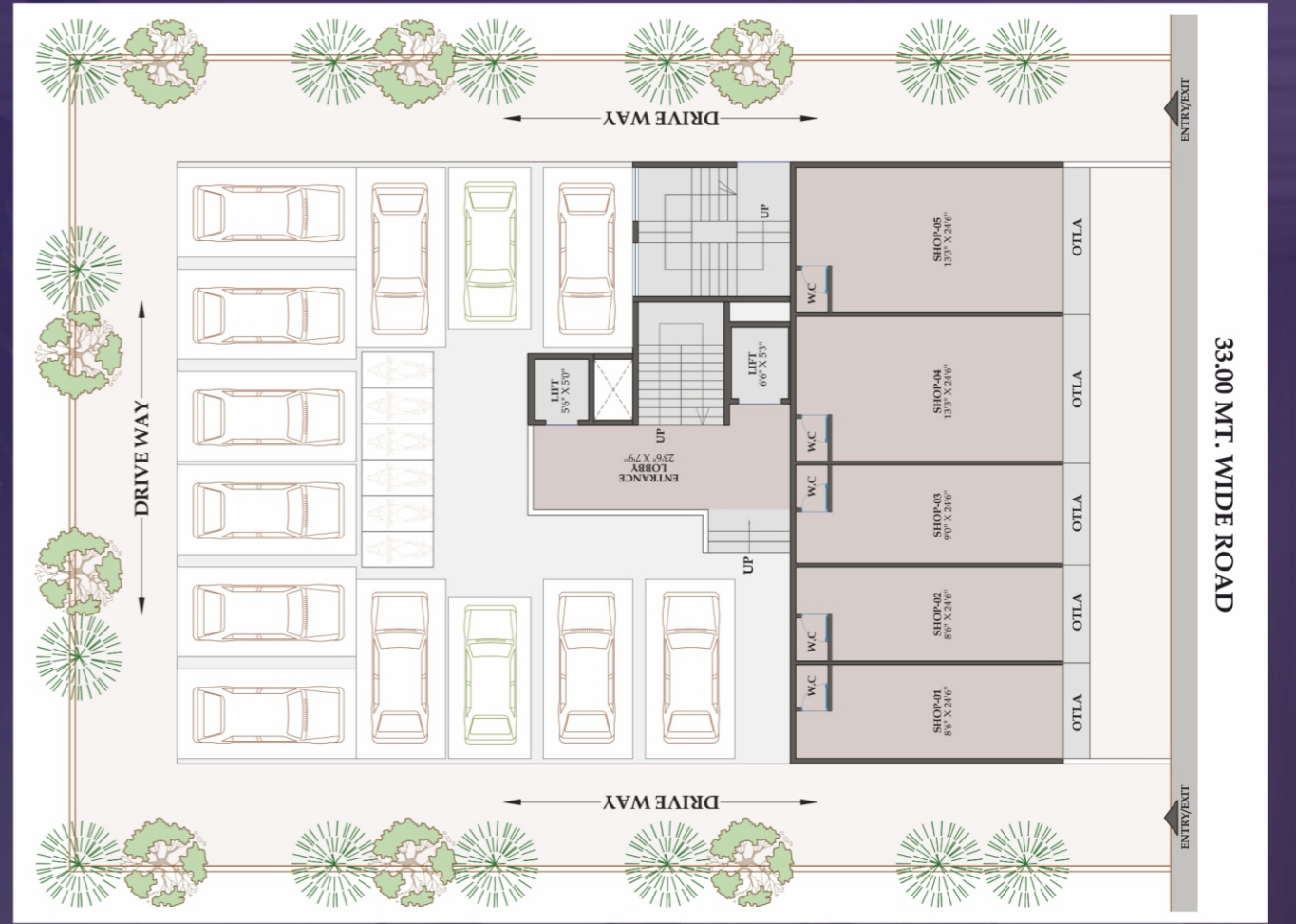
Loans Available & Approved By Major Financial Institutions & Banks



DNYANESHWAR CAPITAL



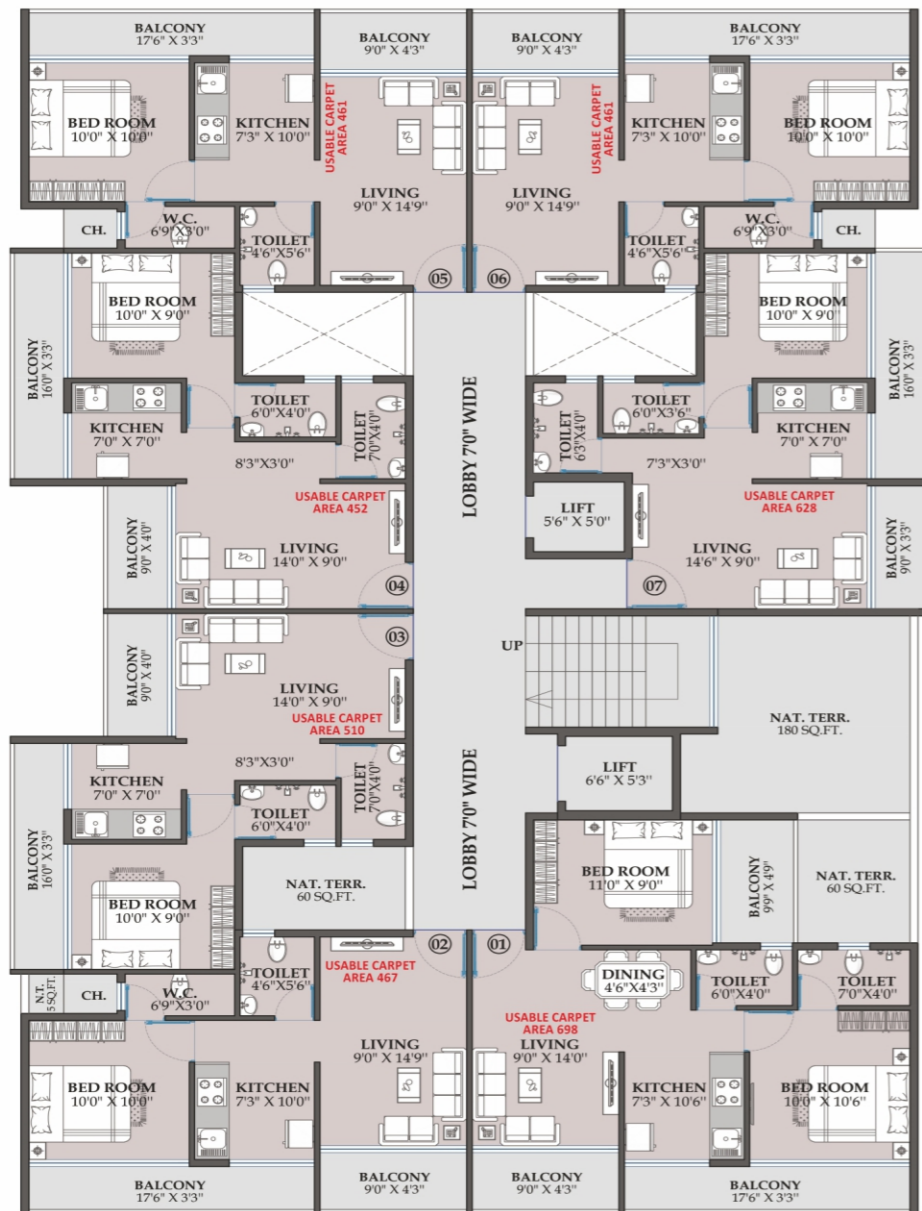
LAVISH GYM



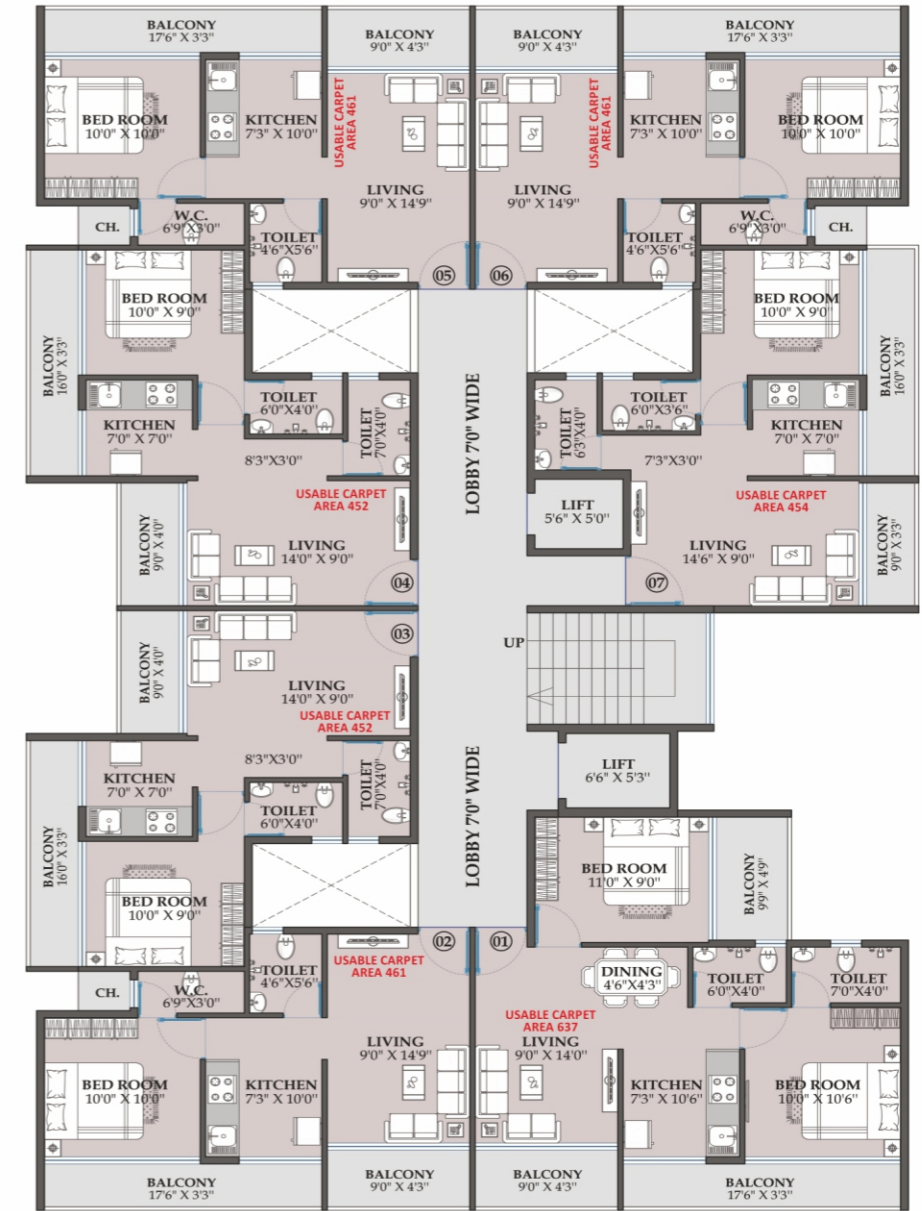
GROUND FLOOR



1st FLOOR



2nd FLOOR



3rd, 4th, 5th, 6th, 7th FLOOR

